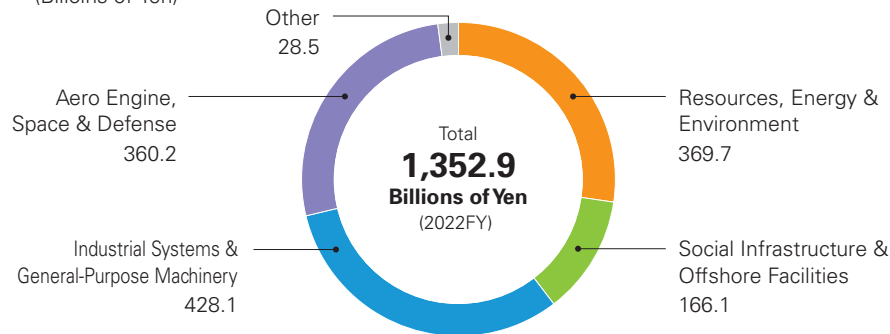


Corporate Data/Share Information

Company Name	IHI Corporation
Head Office	Toyosu IHI Building, 1-1, Toyosu 3-chome, Koto-ku, Tokyo 135-8710, Japan Tel: +81-3-6204-7800
President	Hiroshi Ide
Founded	December 5, 1853
Incorporated	January 17, 1889

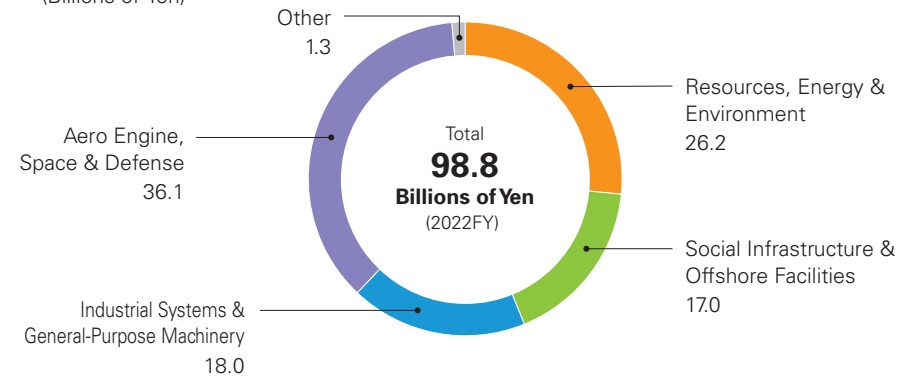
Capital	¥107.1 billion
Number of Employees	28,486 (consolidated), 7,768 (non-consolidated)
Works	7
Branches and Sales Offices	16
Overseas Base	21 (as of April 1, 2023)
Group Companies	145 consolidated subsidiaries 61 affiliated companies in Japan (43 subsidiaries and 18 associated companies) 138 affiliated companies overseas (116 subsidiaries and 22 associated companies)

● Revenue by segment (Billions of Yen)

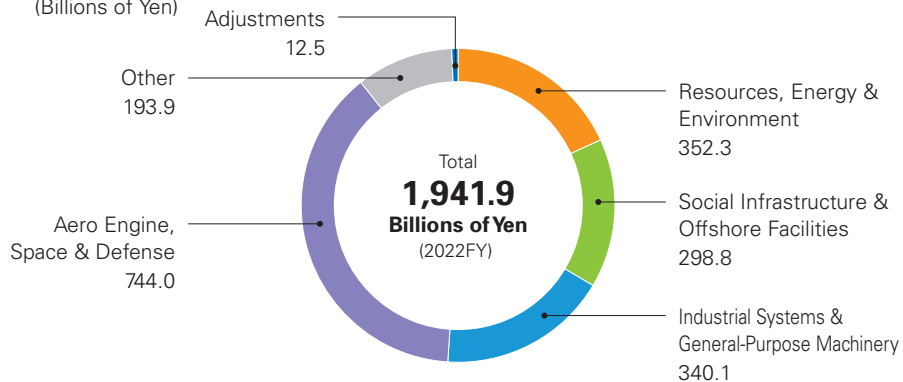


※Revenue of each business domain (excluding adjustments and other factors)

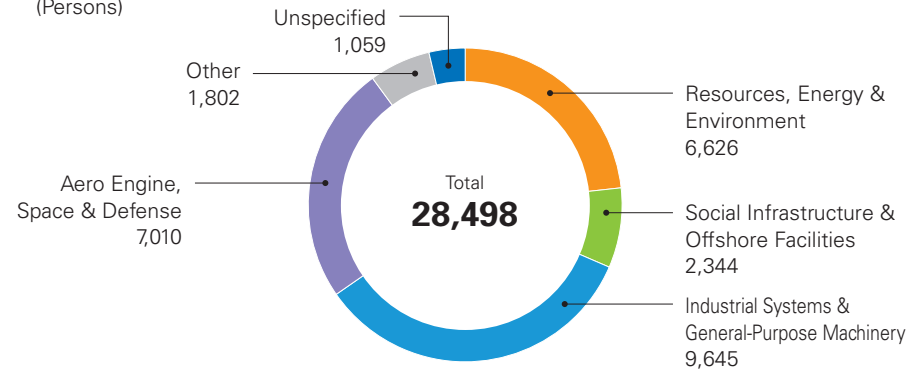
● Segment profit before adjustment (Billions of Yen)



● Segment assets (Billions of Yen)



● Employees by Business Area (Persons)



Note: The number of employees is the number of officially employed individuals, including those seconded to the IHI Group from other companies and excluding Group employees seconded to other companies. Temporary workers are not included.

Securities Code	7013	
Stock Exchange Listings (Market Segment)	Tokyo (Prime)	
Share Unit	100	
Total Number of Authorized Shares	300,000,000	
Outstanding Shares	151,880,647 (not including 2,799,307 treasury shares)	
Shareholders	97,089	
Fiscal Year	April 1 to March 31 of following year	
General Shareholders' Meeting	June of each year	
Record Date for Year-end Dividend	March 31 of each year	
Record Date for Interim Dividend	September 30 of each year	
Shareholder Registry Administrator/Special Account Managing Institution	1-4-1 Marunouchi, Chiyoda-ku, Tokyo 100-8233, Japan Sumitomo Mitsui Trust Bank, Limited	2-8-4 Izumi, Suginami-ku, Tokyo 168-0063, Japan Sumitomo Mitsui Trust Bank, Limited

Major Shareholders

Name	Number of shares held (thousand shares)	Shareholding ratio (%)
The Master Trust Bank of Japan (Holder in Trust)	21,952	14.45
Custody Bank of Japan, Ltd. (Holder in Trust)	12,339	8.12
Custody Bank of Japan, Ltd. as trustee for Mizuho Bank Retirement Benefit Trust Account re-entrusted by Mizuho Trust and Banking Co., Ltd.	3,218	2.11
STATES STREET BANK AND TRUST COMPANY 505001	3,124	2.05
IHI Suppliers Stock Ownership Association	2,774	1.82
The Dai-ichi Life Insurance Company, Limited	2,703	1.77
IHI Employee Stock Ownership Association	2,600	1.71
Sumitomo Life Insurance Company	2,284	1.50
JPMorgan Securities Japan Co., Ltd.	1,845	1.21
Mitsubishi UFJ Morgan Stanley Securities Co.,Ltd.	1,696	1.11

Note

- Shareholding ratios are calculated excluding treasury shares (2,799,307 shares).
- Treasury shares held by IHI is excluded from major shareholders listed above.

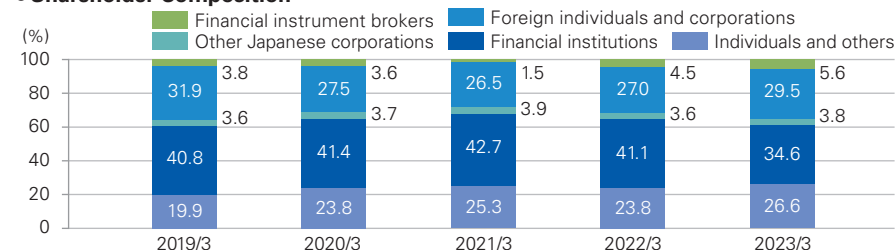
●Stock Price Performance Comparison(TSR: Total Shareholder Return)

(%)

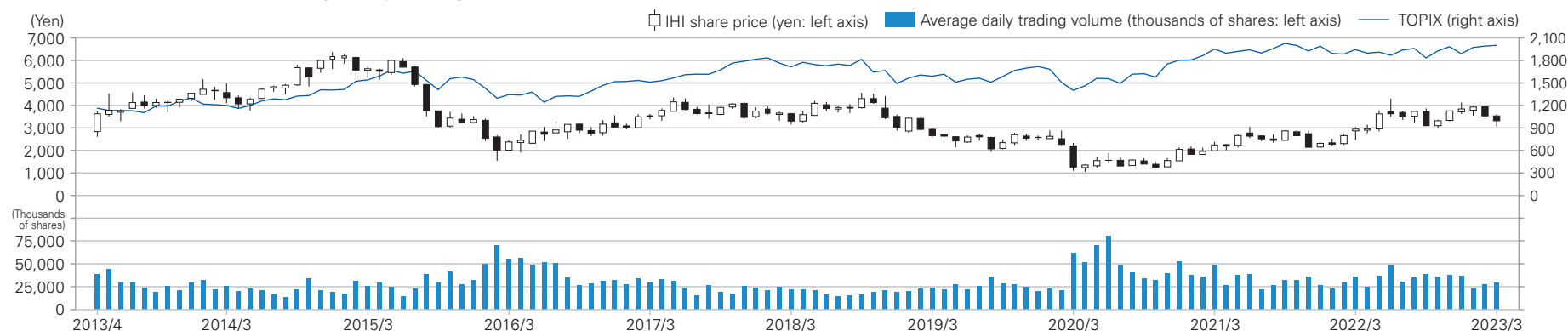
Investment period	One year	Three years	Five years	Ten years
	March 2022 to March 31, 2023	March 2020 to March 31, 2023	March 2018 to March 31, 2023	March 2013 to March 31, 2023
IHI	15.5	175.7	8.9	33.2
TOPIX	5.8	53.3	31.8	142.0
Machinery index	8.6	67.1	29.3	152.6

Note: The above table shows the cumulative return if invested one, five, or 10 years ago based on the total return index as of March 31, 2023.

●Shareholder Composition



●IHI Stock Performance and Average Daily Trading Volume



Note: The Company conducted a consolidation of common stock on a 10 for 1 basis on October 1, 2017.

Data regarding share price and average daily trading volume prior to the consolidation of common stock is calculated on the basis of the consolidation having been implemented.