

# Corporate Profile



At The IHI Group, guided by our management philosophy of  
“Contribute to the development of society through technology” and  
“Human resources are our single most valuable asset,”  
we work alongside customers, stakeholders and employees to  
deliver greater value to society through our advanced problem-solving capabilities.  
We will continue to take on the toughest challenges,  
supporting the safety, security, and prosperity of people worldwide at its core.

## Index

Corporate Message/Index	2-3	Technology Development	28-29
Management Message	4-5	Network and Main Works in Japan	30-31
Historical Highlights	6-7	Main Group Companies and Works in Japan	32-33
Company Profile	8-9	Global Network and Works of Overseas Group Companies	34-35
<b>Main products</b>		Regional Headquarters and Business Development Bases	36
Resources, Energy & Environment Business Area	10-14		
Social Infrastructure Business Area	15-17		
Industrial Systems & General-Purpose Machinery Business Area	18-23		
Aero Engine, Space & Defense Business Area	24-25		
Others	26-27		



President and Chief Executive Officer

**Hiroshi Ide**

Since its founding in 1853, under its management philosophies of “Contribute to the development of society through technology” and “Human resources are our single most valuable asset,” the IHI Group has continuously refined its technologies and responded to the evolving needs of society and industry.

Today, the world stands at a major turning point. Amid growing uncertainty surrounding energy and infrastructure due to environmental changes and rising geopolitical risks, the importance of the foundations that support people’s lives and industrial activities has never been greater. With this recognition of the times, the IHI Group has defined its desired state in 2040 as “Supporting the safety, security, and prosperity of people worldwide at its core.”

As a company that underpins the foundations of society and national strength, the IHI Group will contribute to global security as well as the stability of social and industrial infrastructure across the aerospace, energy, and infrastructure domains.

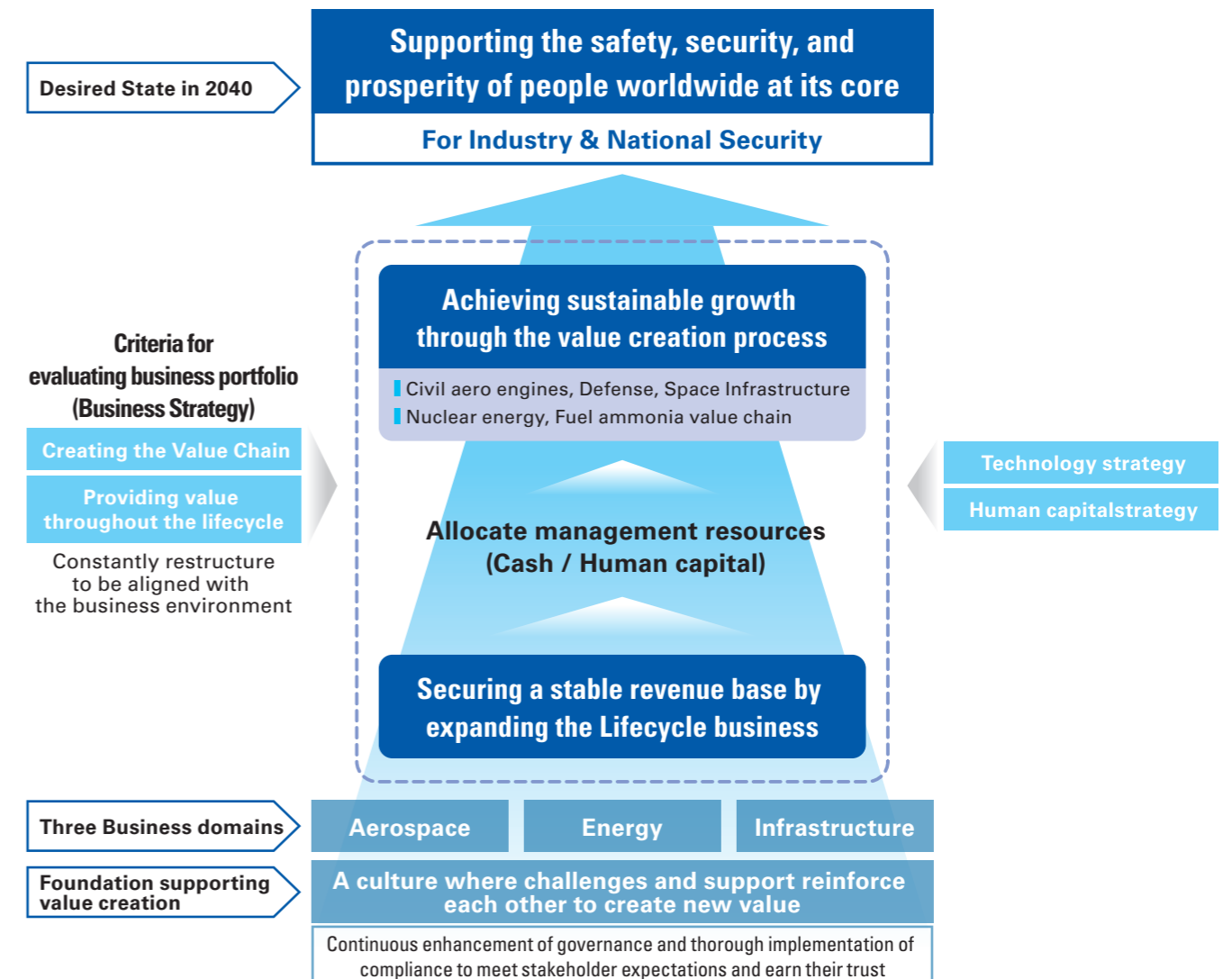
The driving force behind this is our technology and people.

Guided by our business and technology strategies, we will foster a culture in which individuals pursue excellence and embrace challenge, while the organization supports and encourages those efforts. Through this cycle of challenge and support, the IHI Group will continue to create new value.

## Management Direction Toward 2040

IHI has tackled critical challenges since its founding at the industrial as well as national levels through technology, contributing to the safety, security, and prosperity of people in each country and region. This long history of accumulated challenges is the very source of IHI's competitive advantage.

Looking toward 2040, IHI aims to play a key role in elevating Japan's industrial and national strength back to the world's top level, thereby contributing to the economic, national, and energy security of countries worldwide.



# Historical Highlights

IHI helped pioneer Japan's heavy industry. We started out by accumulating shipbuilding technology that we applied to industrial machinery, plant manufacturing and construction. Now we are a key provider of massive elements of industrial and social infrastructure. Our products underscore our management philosophy of contributing to the development of society through technology.



**1853**  
Ishikawajima Manufacturing Shipyard established to protect from invasion of western countries, after a fleet under U.S. Commodore Matthew Perry arrived. The Mito clan set up this facility on instructions from Japan's feudal government.



**1911**  
Completed steel structures for Tokyo Central Station (now Tokyo Station). The company broke away from the convention of erecting a scaffold, winning accolades among architects by using two movable cranes instead.



**1978**  
Built the world's first bargemounted pulp manufacturing plant specifically for Brazil. IHI built this 230-meter facility, mounted it on a barge, and towed it to Brazil.



**2013**  
Epsilon Launch Vehicle. This solid, next generation propellant launch vehicle delivers high performance and low cost. Photo courtesy of JAXA.



**1866**  
Completed the Chiyodamaru, Japan's first steam-powered warship. This vessel employed the first naval steam engine manufactured in Japan. Photo: Postal Museum Japan.



**1945**  
Produced the Ne20, Japan's first jet engine. The engine powered the successfully maiden flight of Japan's first jet.



**1997**  
Constructed large shield tunneling machine for Tokyo Bay Aqualine. With a diameter exceeding 14 meters, this machine dug a 2,853-meter tunnel under Tokyo Bay.



**2016**  
Osman Gazi Bridge, Turkey's longest suspension bridge, opened to provide a crossing over Izmit Bay. Crossing western Turkey's Izmit Bay from south to north, the 1,550-meter structure is the world's fourth-longest suspension bridge.



**1876**  
Established Ishikawajima Hirano Shipyard. Tomiji Hirano set up the nation's first private sector shipyard. Eiichi Shibusawa was heavily involved in funding the company when it was starting up, helping to organize its operations.



**1959**  
Established Ishikawajima do Brasil Estaleiros in Brazil. This was the first Japanese-owned shipyard overseas and heralded the overseas expansion of Japanese companies.



**2007**  
Company name changed from Ishikawajima-Harima Heavy Industries Co., Ltd., to IHI Corporation. Group seeks to become an advanced global brand.



**2023**  
Reached total production of 100 Million turbochargers for vehicles. The IHI Group's total production of turbochargers reached 100 Million units. We will expand production and sales activities worldwide while meeting various needs based on our highly reliable development and production technologies.



**1907**  
Established Harima Dock Co., Ltd. Seitaro Karahata, the head of Aioi village (now Aioi City) in Hyogo Prefecture, established that firm.



**1960**  
Established Ishikawajima-Harima Heavy Industries Co., Ltd. This was the fruit of a merger between onshore machinery leader Ishikawajima Heavy Industries Co., Ltd., and Harima Shipbuilding & Engineering Co., Ltd., a top player in its sector.



**2011**  
GEEx entered into service. We have a roughly 15% share in the international program for this jet engine, which offers significantly improved fuel economy.



**2024**  
A world first - Successful substitute to fuel ammonia for 20% of the fuel used in a Large-Scale coal-fired power plant. JERA has successfully carried out demonstration testing at Unit 4 of the Hekinan Thermal Power Station. The testing confirmed that CO<sub>2</sub> emissions were reduced, NO<sub>x</sub> emissions were curbed, and the plant achieved the same level of performance and operation as before substituting to the use of fuel ammonia.



# Company Profile (As of March 31, 2026)



Year of establishment  
**1853**



Capital  
**107.1** Billion yen



Revenue(Consolidated)  
**1,643.4** Billion yen  
(fiscal 2025)



Number of employees  
(consolidated)  
**26,224**



Works  
**6**



Branches in Japan  
**8**



Overseas Business  
Development Bases  
**20**



Group companies in Japan  
**50**

[Subsidiaries: 35 Affiliates: 15]

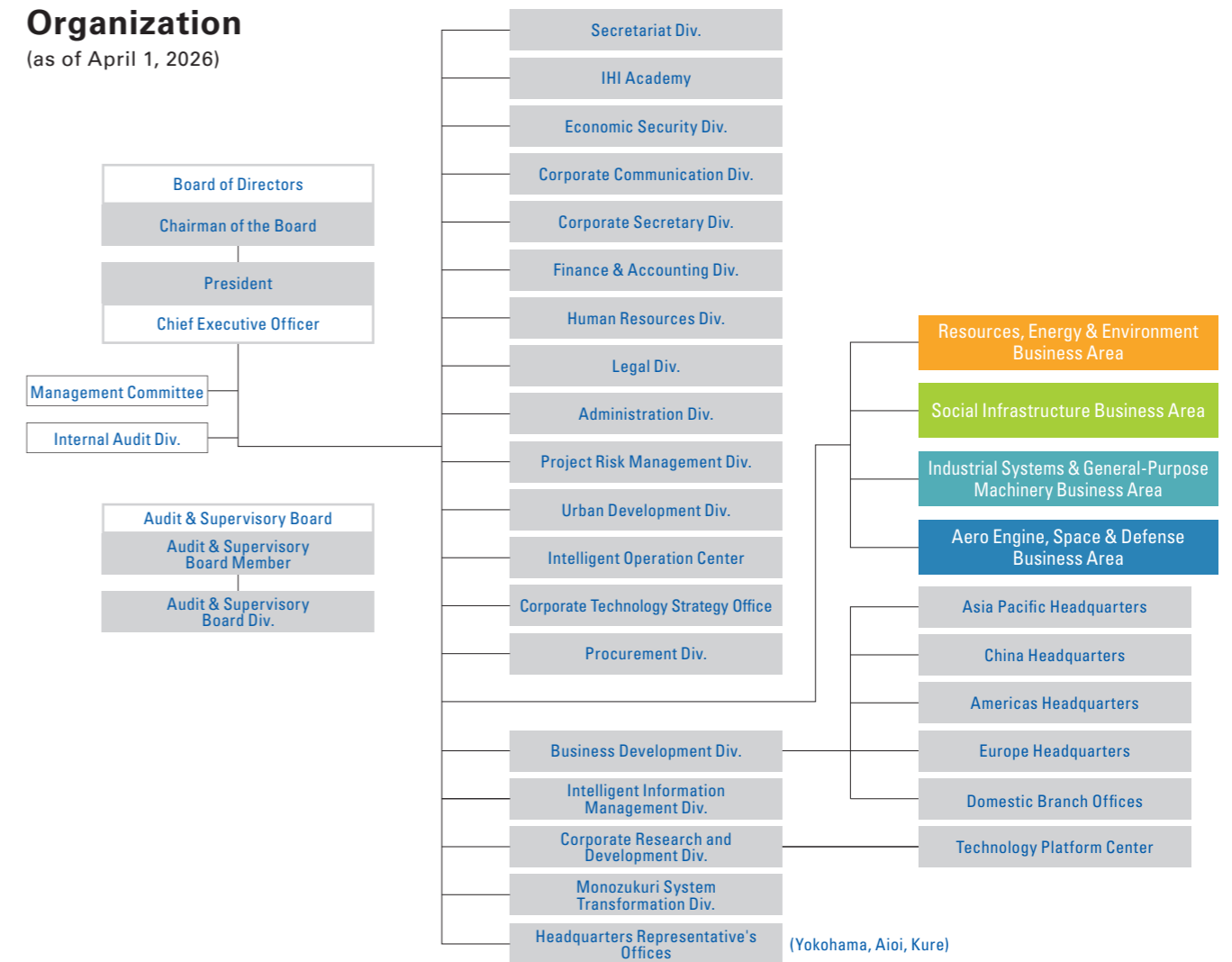


Overseas Group companies  
**116**

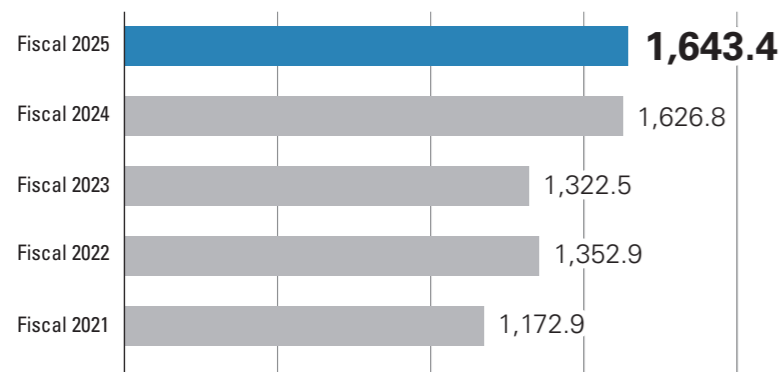
[Subsidiaries: 102 Affiliates: 14]

## Organization

(as of April 1, 2026)



## Sales revenue (Billion yen)



※ IHI adopted International Financial Reporting Standards (IFRS) from fiscal 2020, showing revenue based on IFES.

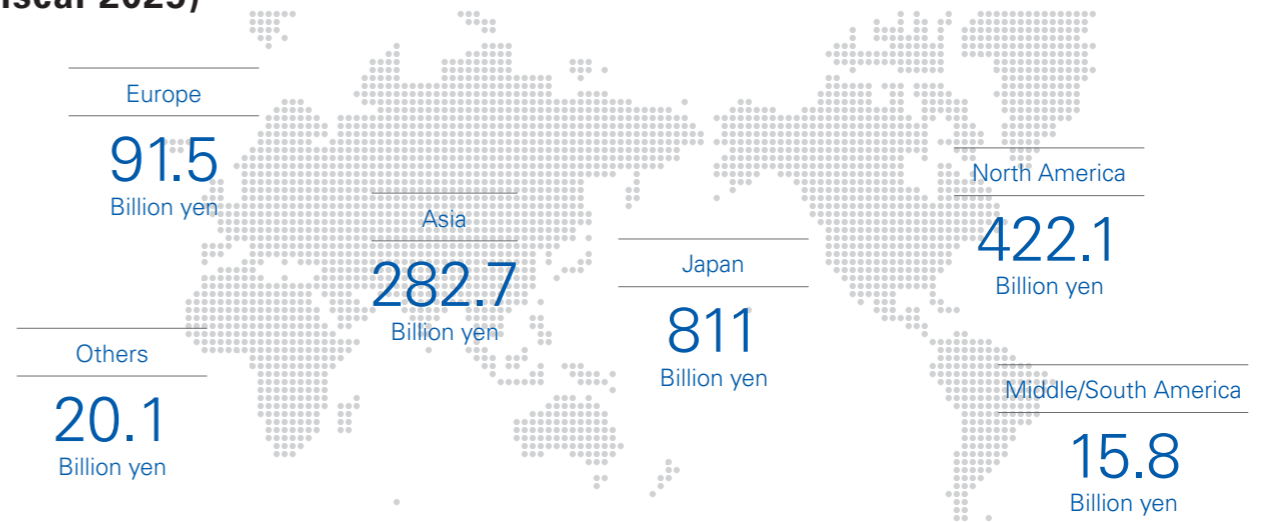
## Revenue Composition by business areas (Consolidated/fiscal 2025)



Note : The total may not be 100% owing to the exclusion of "Other" and "Adjustments".

## Revenue by region (fiscal 2025)

Rounded down to the nearest billion



# Field 01

## Resources, Energy & Environment Business Area

Contribute to carbon-free and recycling societies by providing optimal integrated solutions for each region and customer

■ Carbon Solutions	11
■ LNG Receiving Terminals and Storage Tanks	12
■ Processing Plants	
■ Equipment for Plants	13
■ Nuclear Energy	
■ Gas Turbines, Gas Engines and Diesel Engines	14
■ Propulsion Systems	

## Carbon Solutions

As a leading global supplier of highly efficient and reliable utility boilers, IHI continues to help reduce carbon dioxide emissions and streamline existing power plant operations. It also provides boilers and flue gas equipment for fuels from biomass, waste, and other sources for domestic and international markets. We are working towards the social implementation of carbon capture and utilization and ammonia combustion technologies. Through them, we will provide a range of solutions toward a carbon-free, circular economy.

### Main Products

- Ammonia combustion technology
- Biomass combustion technology
- Carbon capture and utilization technologies
- Energy management systems
- Compact reactors
- Highly efficient boilers
- Operation and maintenance services
- Flue gas treatment systems



Ammonia combustion technology  
Photo of Hekinan Thermal Power Station courtesy of JERA Co., Inc.



Biomass combustion technology  
Photo courtesy of Nanatsujima Biomass Power Limited Liability Company



Methanation technology as carbon recycling technologies  
Methanation equipment "I-MethaCube™"

## LNG Receiving Terminals and Storage Tanks

The IHI Group has the top share of the Japanese market for LNG receiving terminals and storage tanks. It has expanded overseas, building a construction track record in India, Qatar, Mexico, Taiwan, the United States, and China. IHI is the global market leader in all types of LNG storage tank. These include double-shell metal, above-ground prestressed concrete, and underground membrane tanks.

### Main Products

- LNG receiving terminals
- Above ground LNG storage tank
- In-ground LNG storage tank
- Underground LNG storage tank



LNG receiving terminal  
(Semptra's Cameron LNG receiving terminal in Louisiana, USA)  
Photo courtesy of Semptra LNG  
©All rights reserved by Semptra LNG



Membrane of world's largest underground LNG tank  
Photo courtesy of Tokyo Gas Co., Ltd.



In-ground LNG storage tank

## Processing Plants

IHI has amassed an excellent record in Japan and abroad in diverse plant construction fields. These include natural gas liquefaction plants, petroleum refineries, petrochemicals, and LPG, encompassing engineering through equipment procurement, construction, and start-ups.

### Main Products

- Oil and gas plants
- Chemical plants
- Natural gas liquefaction plants



Natural gas liquefaction plants



LPG plants

## Equipment for Plants

We supply an array of plant equipment, including heating furnaces and cooling towers.

### Main Products

- Furnaces
- Air-cooled heat exchangers
- Chemical plant equipment
- HTS reactors
- EO reactors
- Wastewater treatment facilities



Pressure vessels / Wastewater treatment facility

## Nuclear Energy

In the field of nuclear energy, we supply key equipment such as reactor pressure vessels, containment vessels, and piping systems to projects in Japan and around the world. We also have extensive experience across the nuclear fuel cycle, including the design and construction of radioactive waste treatment facilities. Currently, we support the safe restart of nuclear power plants and the completion of spent fuel reprocessing facilities through the implementation of enhanced safety measures. At the same time, we are advancing technologies for next-generation reactors and decommissioning, contributing to the stable supply of low-carbon energy.

### Main Products

- Components for nuclear power plants
- Facilities for nuclear fuel cycle related equipment
- Pressure vessels



Containment vessel and heavy structures  
Photo courtesy of Tohoku Electric Power Co., Inc.



Reactor pressure vessel  
Photo courtesy of Tokyo Electric Power Company Holdings, Inc.



Vitrification facility for high-level radioactive waste  
Photo courtesy of Japan Nuclear Fuel Limited

## Gas Turbines, Gas Engines and Diesel Engines

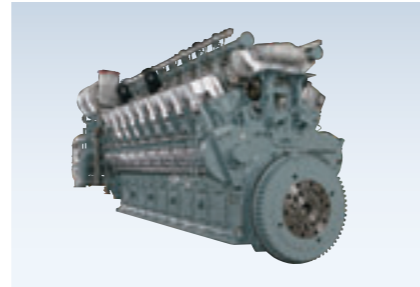
IHI provides a wide variety of power generating products, including gas turbines, diesel engines and gas engines with simple cycle, co-generation and combined cycle power systems. We supply eco-friendly marine diesel and dual-fuel engines. We are minimizing NOx and CO<sub>2</sub> emissions by adopting high-efficiency, low emission technologies. We also provide remote monitoring, maintenance and other services throughout product lifecycles.

### Main Products

- Simple/combined cycle power generation systems
- Co-generation power systems
- Co-generation systems
- Diesel engines (marine, land)
- Gas engines
- Dual-fuel engines
- Gas turbines



LM6000 gas turbine power plant



18V28AGS gas engine



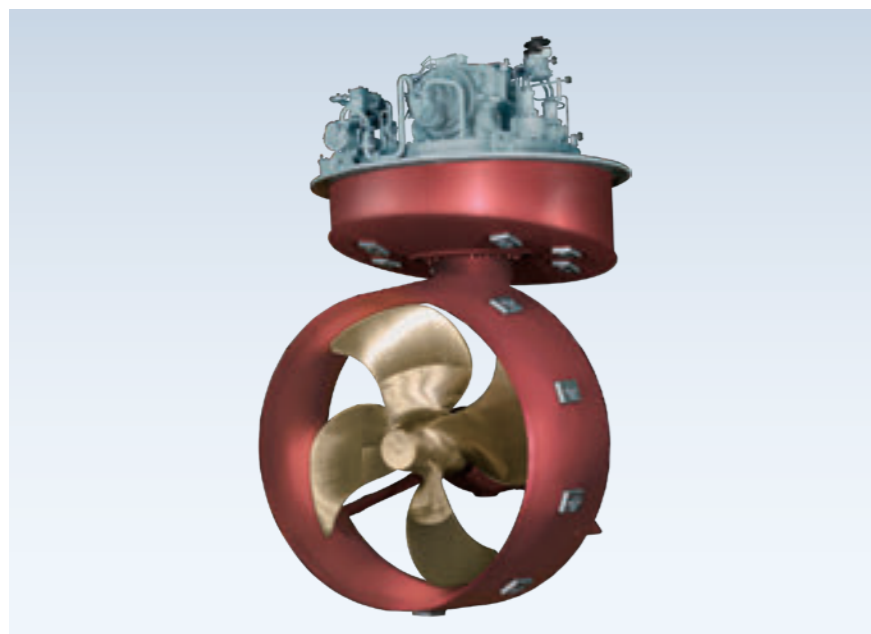
6L28ADF Ammonia Dual Fuel Engine

## Propulsion Systems

We are one of the top players in the global tugboat market. Our Z-PELLER<sup>®</sup> propulsion unit has earned an outstanding reputation among customers for its quality and durability. Beyond tugboats, applications are diversifying for a variety of marine utility vessels. They include oil recovery and other emergency response boats, floating cranes for port and offshore construction, dredgers, oil rigs, and wind farm support vessels.

### Main Products

- Azimuth thruster "Z-PELLER™"



Azimuth thruster "Z-PELLER™"

# Field 02

## Social Infrastructure Business Area

Contribute globally and across life cycles to materialize safe and secure social infrastructures, centered on bridges and tunnels

■ Bridges	16
■ Water Gates	
■ Shield Tunneling Machines	17
■ Mass Dampers / Seismic Isolation Floors	

## Bridges

In Japan, we helped build such major structures as the Akashi Strait Bridge. Among our numerous overseas achievements was our construction of Turkey's Osman Gazi Bridge, the world's fourth longest suspension bridge at the time of its completion, across Izmit Bay.



Osman Gazi Bridge across Izmit Bay

### Main Products

- Bridges
- Temporary assembling bridges

## Shield Tunneling Machines

We have some of the highest business results in the development, commercialization, and provision of automatic segment erecting system for various shield machines so as this achieve large-scale streamlining of tunnel construction. These shield machines include shield machines with some of the largest bore diameters in the world, as well as composite round type shield machines.



Large-diameter shield tunneling machines

### Main Products

- Shield tunneling machines



Special section (double-o tube) shield tunneling machines

## Water Gates

As Japan's leading manufacturer of water gates, we help with construction for water and flood control projects domestically and abroad.



River gate (Kesengawa Gate)

### Main Products

- Water gate equipment for rivers
- Water gate equipment for dams

## Mass Dampers / Seismic Isolation Floors

Starting with vibration control technologies developed to mitigate the swaying of suspension bridge towers during construction, we have expanded these technologies into a wide range of fields. Today, they are applied not only to bridges but also to high-rise buildings, control towers, ships, and data centers.



Active mass dampers

### Main Products

- Mass damper systems
- Seismic isolation floor systems

# Field 03

## Industrial Systems & General-Purpose Machinery Business Area

Contribute to industrial infrastructure progress by  
thoroughly optimizing operational lifecycles with customers

■ Parking Systems	19
■ Turbochargers	19
■ Rotating Machinery	20
■ Logistics Solutions	20
■ Factory Solutions	21
■ Heat Treatment and Surface Engineering	21
■ Iron, Steel and Coke-Making Equipment	22
■ Pulp and Paper Machinery	22
■ Agricultural Machinery	23

## Parking Systems

Since installing Japan first tower parking system in 1962, IHI has drawn on its experience, reliability, and proprietary technology to perfect these setups. We offer optimal solutions throughout product lifecycles by maintaining, inspecting, and proposing upgrades through 155 service sites around the nation.

### Main Products

- Tower parking systems (pallet type)
- Super Square Parking Systems (for underground parking)
- Ramp parking systems
- Multi-storey parking systems
- Parking lot operations and management



Tower parking systems(pallet type) / Super square parking systems (for underground parking)



Ramp parking systems



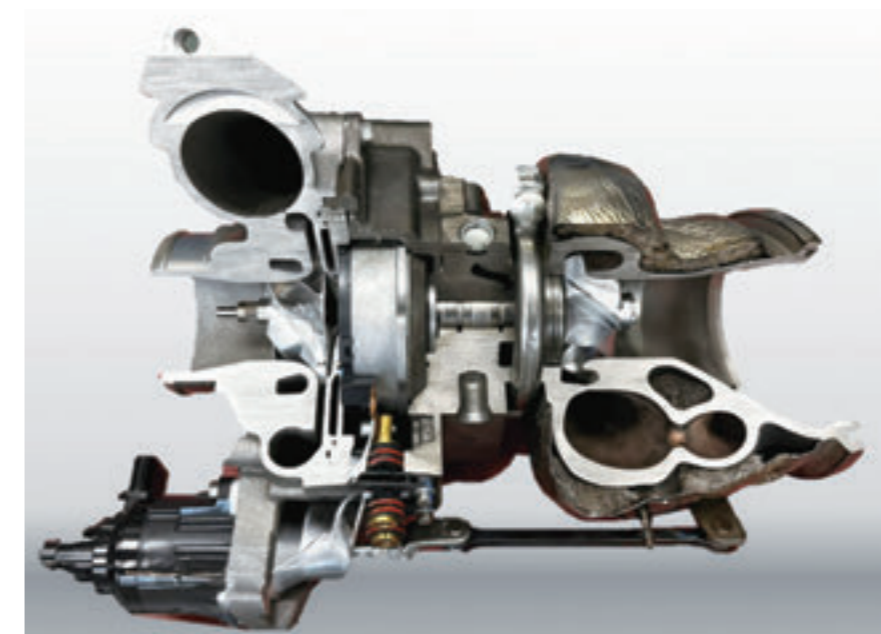
Multi-storey parking systems

## Turbochargers

Turbochargers force compressed air into combustion chambers to enhance performance. IHI's broad turbocharger range extends from large models for large marine and land power generators to small ones for automobile engines. We have manufactured more than 100 million automotive turbochargers. We maintain development, production, and sales units in the United States, Italy, Thailand, China, and do business worldwide.

### Main Products

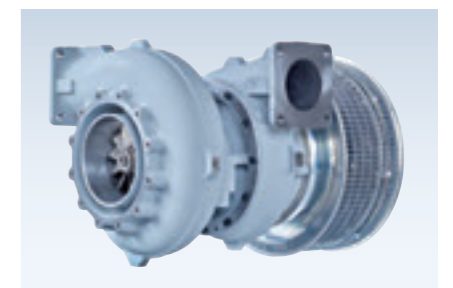
- Turbochargers



Electric motor Assisted Turbocharger for Hybrid Electric Vehicle



Turbochargers for vehicles



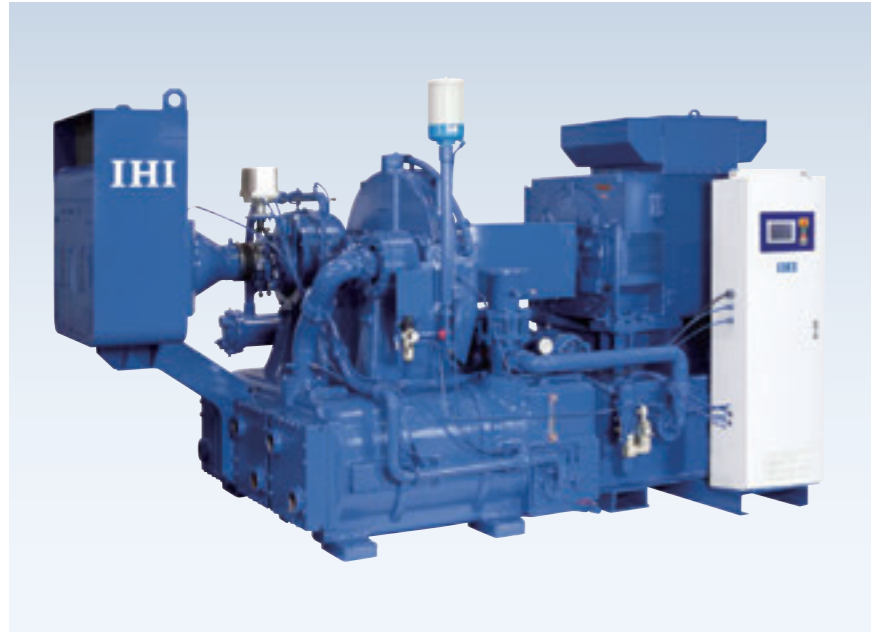
Turbochargers for marine vessels

## Rotating Machinery

We are proud to support plant operations across the globe not only by holding a world-leading market share in LNG boil off gas compressors and a top share in Japan for centrifugal air compressors, but also by providing separators and filters essential for solid-liquid separation processes in the chemical and food manufacturing sectors. We stay close to our customers, addressing their concerns and challenges while offering optimal solutions in engineering, after-sales service, and energy saving.

### Main Products

- Compressors
- Separators
- Filters
- Gears



Centrifugal air compressors



Screw decanter centrifuges



Process gas reciprocating compressors

## Logistics Solutions

The rapid development of the e-commerce market has caused serious labor shortages in the logistic industry. It is thus imperative to automate operations and boost capacity. IHI offers an array of logistics systems, including automated freezer and refrigeration warehouses that can run at temperatures as low as -60°C, automated hazardous materials warehouses, storage and retrieval facilities for clean rooms, and AI depalletizing systems. We draw on our expertise in a range of industries to provide optimal logistic solutions for customers.

### Main Products

- Storage systems
- Transportation systems
- Sorting and picking systems
- Automated materials handling systems for clean rooms



Freezer automated storage and retrieval systems



Laser guided forklifts



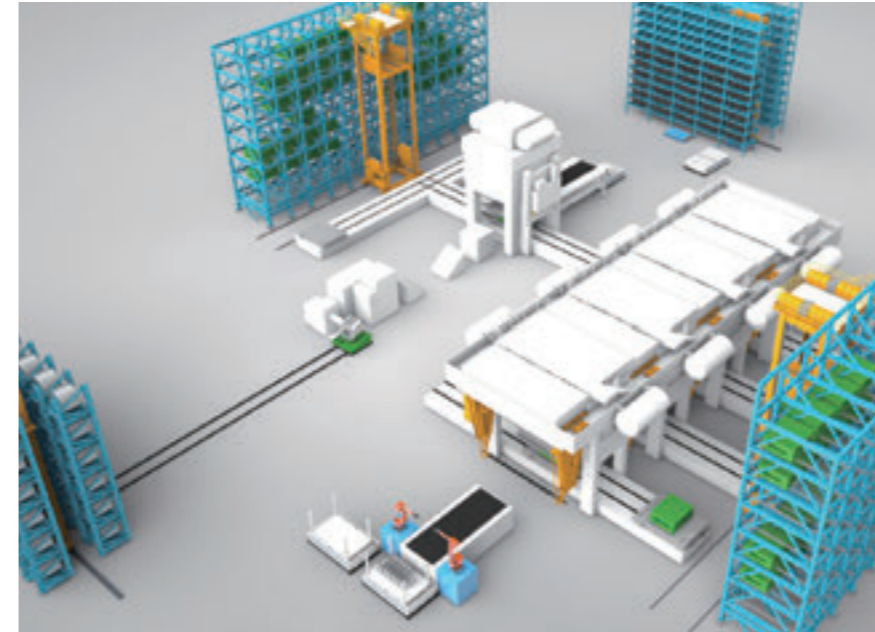
AI-powered depalletizing systems

## Factory Solutions

Manufacturers face a range of challenges, including recruiting, using complex high-mix, low-volume production, and achieving carbon neutrality. We accordingly help them by customizing optimal factory solutions through automation, improving productivity with digital technology, efficiently managing information, and conserving energy.

### Main Products

- Factory automation system
- Transfer systems
- Automotive press lines
- Rubber and plastic film sheeting lines
- Industrial machinery



Factory automation system



Retrofitting for conveyors between presses



High speed transfer feeder "X-Feeder"

## Heat Treatment and Surface Engineering

IHI provides a diverse lineup of heat treatment equipment and processes across numerous industries. Our offerings include vacuum heat treatment furnaces, high-pressure sintering furnaces, hot presses, high purification furnaces, and heat treatment processing business. We also provide advanced coating solutions featuring a broad range of hard, low friction, wear and corrosion resistant coatings based on PVD, PACVD and CVD technologies for a wide range of industries such as aerospace, automotive and medical applications.

### Main Products

- Advanced material manufacturing equipment
- Vacuum thermal treatment equipment
- Thin film and surface treatment equipment
- Heat treatment and coating services



Vacuum furnace



Vacuum hot press for diffusion bonding



PVD/PACVD coating equipment

## Iron, Steel and Coke-Making Equipment

Paul Wurth IHI provides cutting-edge technologies from engineering through manufacturing and construction work of iron and steel plants. We focus on blast furnaces and coke ovens and electric arc furnaces, which are the principal facilities of integrated steel plants. IHI and Paul Wurth Group will contribute for steel industries to achieve carbon neutrality, an urgent priority for them, by leveraging the technologies of joint venture Paul Wurth IHI Co., Ltd.



Blast furnace  
Photo courtesy of Nippon Steel Corporation

### Main Products

- Industrial furnaces

## Agricultural Machinery

We provide agricultural machinery for various operations to help our customers save labor, make it smarter, and improve efficiency.



STAR Combination Baler JCB1810

### Main Products

- Agricultural machinery

## Pulp and Paper Machinery

High-speed paper machine is often longer than 100 meters, and plays pivotal roles at paper mills. We have built impressive positions in Japan and abroad for our coaters, which enhance the printability and finish of paper. We are one of Japan's leading pulp and paper machinery manufacturers. Our stock preparation machines optimize raw materials for paper. They deliver world-class energy savings and help resolve environmental issues.



Paper Machine

### Main Products

- Pulp and paper machinery

# Field 04

## Aero Engine, Space & Defense Business Area

We will leverage our core technology in “Propulsion” to open new vistas for air transportation, defense systems, and space utilization, helping to bring forth a safe and affluent society.

- Aircraft Engines
- Rocket systems and space utilization systems

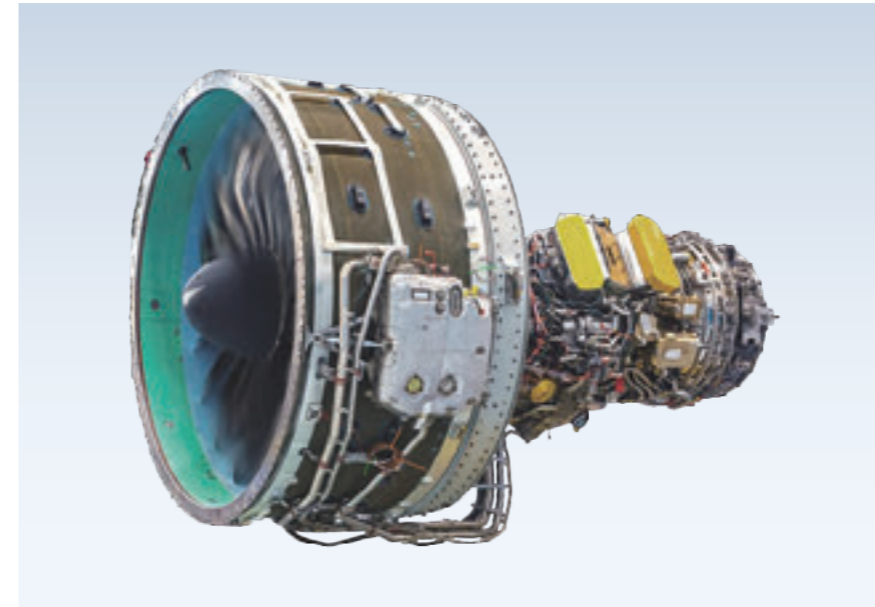
25

### Aircraft Engines

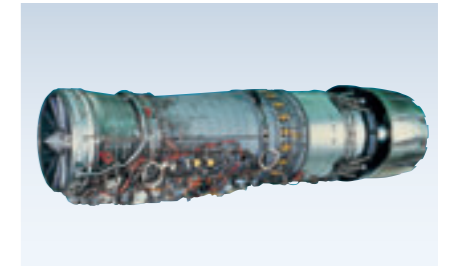
IHI is Japan's leading maker of jet engines. We are the primary contractor and manufacturer for aircraft engines used by the Ministry of Defense, covering all fighter aircraft models. We collaborate in international projects to develop and supply engine modules and components for civilian aircraft, and are renowned as Asia's core engine maintenance provider. We conduct research and development into advanced, eco-friendly engines.

#### Main Products

- Turbofan engines
- Turboshaft engines
- Turbojet engines
- Turboprop engines
- Jet engine maintenance
- Jet engine test cells
- Jet engine parts



PW1100G-JM turbofan engine mounted on Airbus A320neo  
Photo courtesy of JAEC



F110 turbofan engine powering F-2 support fighter



Aero engine maintenance

### Rocket systems and space utilization systems

IHI has participated in Japan's space development from the outset. Leveraging our technologies, we develop and manufacture core components of rocket engines, such as turbopumps, gas-jet systems, and solid rocket motors essential for successful launches. We also play an important role in the development and construction of the Exposed Facility of the Japanese Experiment Module “Kibo,” which is part of the International Space Station program, and we support research by supplying systems and equipment for international cooperative projects. In addition, we are expanding our role as a space solutions provider, contributing to society through rocket launch services and satellite-based applications.

#### Main Products

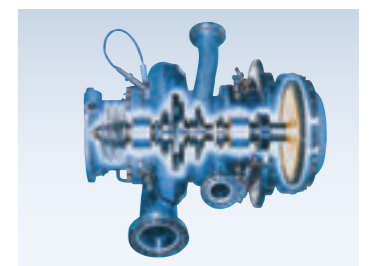
- Rockets
- Rocket propulsion systems
- Rocket control systems
- Satellite propulsion systems
- Satellite control systems
- Equipment for utilization of space environment
- Space station-related equipment
- Ground test facilities
- Ground support facilities



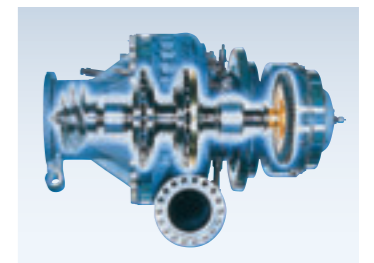
Epsilon-5 Launch vehicle  
© JAXA

H3 Launch vehicle No.5  
© JAXA

H-IIA Launch vehicle No.47  
© JAXA



Liquid oxygen turbopump for rocket engines



Liquid hydrogen turbopump for rocket engines

# Others

## Security

### Main Products

- 3D Laser Radar™
- Noise reduction systems

IHI brings products to the world that employ mechatronics and sensing technology. We have delivered more than 3,700 3D Laser Radar systems in Japan and abroad, mainly to prevent and reduce accidents at railway level crossings.



3D Laser Radar™

# Developing Technologies to Diversify Options for Society

## IHI's technology

Under one of its management philosophies that IHI aims to "Contribute to the development of society through technology," IHI has continuously strived to pursue cutting-edge technology since its establishment. Currently, social challenges to be solved have become sophisticated, complicated, and large-scale due to the rapid change in the social environment. To address such challenges, IHI will develop technologies required by the present and future society to be sources of new value by identifying them through close observation of society and sometimes combining them.

### Challenge aimed at decarbonization through ammonia utilization technology



The IHI Group focuses on the utilization of ammonia to provide sustainable solutions to energy problems. In particular, we have been developing ammonia-related technologies to utilize ammonia in various applications, including gas turbines, boilers, and marine engines.

### CO<sub>2</sub> circular utilization with carbon recycling technology



The IHI Group has been working to develop technology to capture CO<sub>2</sub> and synthesize hydrocarbons with it. By establishing CO<sub>2</sub> circular utilization technology, which serves as a basis of methanation and producing olefins and sustainable aviation fuel(SAF), we will contribute to the realization of a carbon-neutral society.

### Innovation in high functional materials and advanced manufacturing technology



The IHI Group integrates high functional materials and advanced manufacturing technology to improve composite materials, forging and casting technologies. These improvements contribute to the increase in energy efficiency and reduction of environmental burden especially in the aviation field.

### Operational technology to achieve advanced automation



The IHI Group utilizes artificial intelligence (AI) and Robot Operating System (ROS) to enhance the operational accuracy and efficiency of industrial robots. We will promote unmanned and automated operations by developing autonomous mobile robots and multi agent control systems, thereby contributing to the solution of social issues.

Website on Technology of the IHI Group



IHI ENGINEERING REVIEW



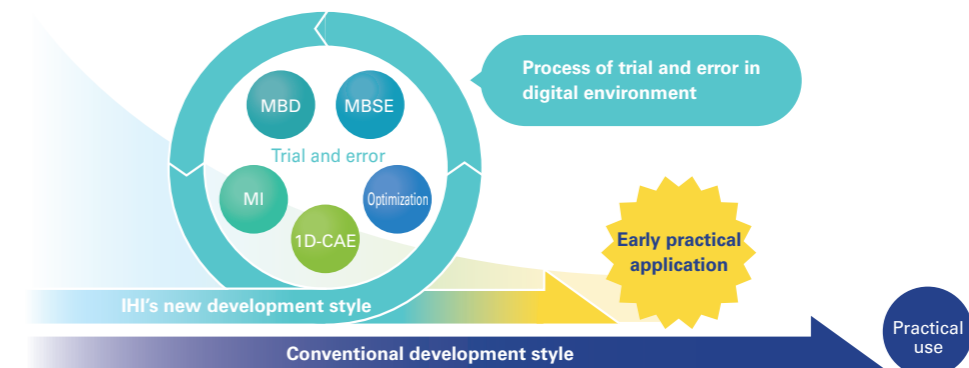
Website on Core.tech



## Accelerating development speed

We cannot keep up with the rapidly changing environment only with the conventional development style based on scrupulous planning made over time. In addition, it is important to take a process of trial and error and learn from many small mistakes in developing imaginative technologies with potential to reach new value.

Under the newly-adopted concepts of model-based development and model-based systems engineering, IHI accumulates findings through repeated trial and error in the digital environment and works to further strengthen collaboration between technology teams.



Speeding up development process to provide value for society quickly

Notes : MBD : Model-Based Development    MBSE : Model-Based Systems Engineering  
MI : Materials Informatics    1D-CAE : One-Dimensional Computer-Aided Engineering

## Participation in top ecosystems

Toward the goal of solving complex social issues, it is indispensable to create new value in collaboration with other companies, universities, and organizations and to commercialize the value in consideration of the entire value chain. For this purpose, we participate in and contribute to communities (top ecosystems) of world-class researchers and engineers in various fields, understand the latest technological trends they lead and incorporate the trends in planning our technology development strategy.

## Collaboration bases

We have been working to create new value and provide the value to society. For this purpose, we have established two facilities at the IHI Yokohama Works, where Corporate Research & Development Division is located. One is "Tsunagu Lab." to encourage visitors to understand and sympathize with IHI's businesses and technologies. The other is "Ignition Base (commonly called i-Base)", where we confront, consider and aim to solve ever-more complex social issues in collaboration with multiple players including those outside the IHI Group. We also focus on having interactive dialogues with various stakeholders. For example, at Soma IHI Green Energy Center, located in Soma City, Fukushima Prefecture, we have been conducting a sustainable, local production and consumption-type smart community project as a model case of a recycling-oriented local community.



Tsunagu Lab.



Ignition Base "i-Base"



Soma IHI Green Energy Center

# Network and Main Works in Japan (As of April 1, 2026)

## Head Office

Toyosu IHI Bldg., 1-1, Toyosu 3-chome,  
Koto-ku, Tokyo 135-8710  
TEL: +81-3-6204-7800

## Akishima Office

2-1, Daikanyama 3-chome,  
Akishima-shi, Tokyo 196-8686  
TEL: +81-42-500-7250

## Yokohama Engineering Center

1, Shin-Nakahara-cho, Isogo-ku,  
Yokohama-shi, Kanagawa 235-8501  
TEL: +81-45-759-2111

## Headquarters Representatives' Office, Aioi District

5292, Aioi, Aioi-shi, Hyogo 678-0041  
TEL: +81-791-24-2206

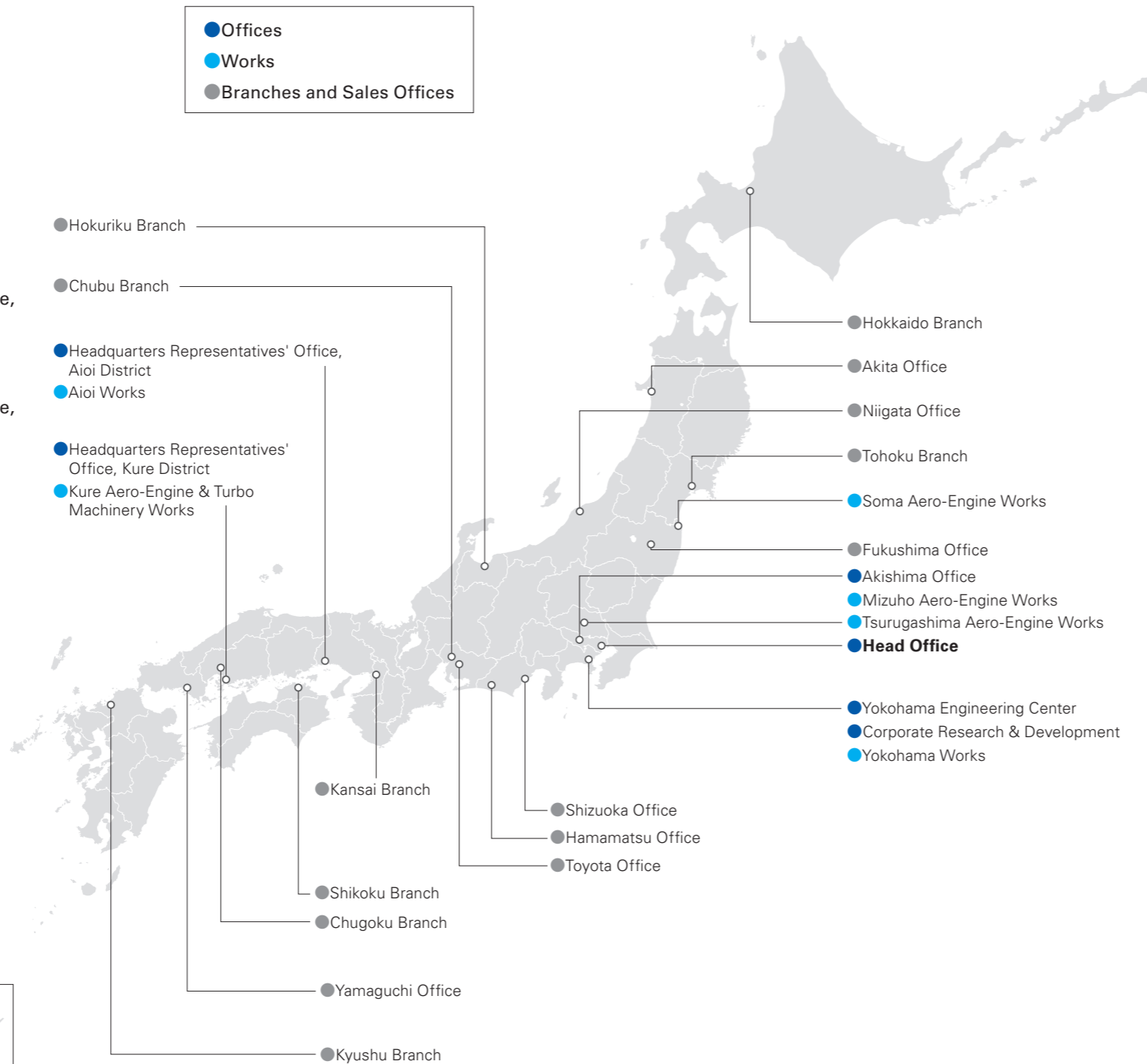
## Headquarters Representatives' Office, Kure District

2-1, Showa-cho, Kure-shi, Hiroshima 737-0027  
TEL: +81-823-26-2105

## Corporate Research & Development

1, Shin-Nakahara-cho, Isogo-ku,  
Yokohama-shi, Kanagawa 235-8501  
TEL: +81-45-759-2213

- Offices
- Works
- Branches and Sales Offices



## Soma Aero-Engine Works

Site Area: Approx. 374,000 m<sup>2</sup>  
Products & Services: Jet engine, gas turbines and space development equipment parts  
Certificates: JIS Q 9100 & JIS Q 9001 (ISO 9001) ISO 14001 JIS Q 27001 (ISO/IEC 27001) Nadcap Pratt & Whitney LCS



## Tsurugashima Aero-Engine Works

Site Area: Approx. 136,000 m<sup>2</sup>  
Products & Services: Civil aero-engine maintenance  
Certificates: JIS Q 9100 & JIS Q 9001 (ISO 9001) FAA Repair Station JCAB Approved Organization EASA Maintenance Organisation CAAC Maintenance Organization Jet engine maintenance approval from 13 countries ISO 14001 JIS Q 27001 (ISO/IEC 27001)



## Mizuho Aero-Engine Works

Site Area: Approx. 201,000 m<sup>2</sup>  
Products & Services: Assembling and overhauling jet engines, gas turbines, space development equipment and defense systems  
Certificates: JIS Q 9100 & JIS Q 9001 (ISO 9001) FAA Repair Station JCAB Approved Organization EASA Maintenance Organisation CAAC Maintenance Organization Jet engine maintenance approval from 13 countries ISO 14001 JIS Q 27001 (ISO/IEC 27001) Nadcap



## Yokohama Works

Site Area: Approx. 227,000 m<sup>2</sup>  
Products & Services: Manufacturing, installation, operational maintenance, and inspections of nuclear power plants, nuclear fuel cycle systems, chemical process facilities equipment, decontamination and decommissioning facilities, and thermal power plant equipment, and manufacturing of industrial equipment  
Certificates: ASME (N, NPT, NA, NS, U, U2, S) ISO 9001:2015 ISO 14001:2015



## Aioi Works

Site Area: Approx. 229,000 m<sup>2</sup>  
Products & Services: Manufacturing and development of boiler, boiler auxiliary equipment, storage tank, reactor, steel structure, and carbon solution equipment (methanation system, gas turbine)  
Certificates: ISO 9001:2015 ISO 14001:2015 ASME (S, U, U2)



## Kure Aero-Engine & Turbo Machinery Works

Site Area: Approx. 48,000 m<sup>2</sup>  
Products & Services: Manufacturing jet engine and gas turbine parts, and assembling and testing gas turbines  
Certificates: JIS Q 9100 & JIS Q 9001 (ISO 9001) ISO 14001 JIS Q 27001 (ISO/IEC 27001) Nadcap

# Main Group Companies and Works in Japan (As of April 1, 2026)

## Resources, Energy & Environment Business Area

### Aomori Plant Co., Ltd.

Remodeling and maintaining reprocessing and other facilities

### IHI Plant Services Corporation

Services related to engineering, procuring, constructing, commissioning, and maintaining thermal power plants, renewable energy, storage facilities, oil & gas plants, chemical plants, nuclear power plants, industrial machinery, and other equipment and facilities

### IHI Power Systems Co., Ltd.

Manufacturing, selling, and servicing diesel engines, gas engines, dual fuel engines, gas turbines, and Z-PELLER® marine propulsion units



Main Works **Ota Plant**  
Site Area Approx. 152,000 m<sup>2</sup>  
Products & Services Diesel engines, gas engines, dual fuel engines, and Z-PELLER® azimuth propeller  
Certificates ISO 9001, ISO 14001, NK, LR

### NICO Precision Co., Inc.

Designing, manufacturing, and selling fuel injection equipment for marine and power plant diesel engines

## Social Infrastructure Business Area

### IHI Infra-square Co., Ltd.

Business related to the design, fabrication, installation, and maintenance of steel bridges and prestressed concrete bridges  
Business related to the design, fabrication, installation, maintenance, and control systems of water gates and other structures, as well as business related to disaster management equipment, etc



Main Works **Sakai Works**  
Site Area Approx. 175,000 m<sup>2</sup>  
Products & Services Bridges, Water gates and other steel structures  
Certificates

### JIM TECHNOLOGY CORPORATION

Designing and selling tunnel boring machines and equipment

### San-Etsu Co., Ltd.

Maintenance and repairing of railway maintenance vehicle, snowplows and construction equipment, and engines, etc

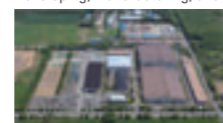
## Industrial Systems & General-Purpose Machinery Business Area

### CENTRAL CONVEYOR COMPANY, LTD.

Engineering, manufacturing, selling, installing, providing electrical work, maintenance, and after-sales service for materials handling systems conveyors

### IHI Agri-Tech Corporation

Developing, manufacturing, and selling agricultural machinery



Main Works **Chitose Works**  
Site Area Approx. 86,000 m<sup>2</sup>  
Products & Services Implements, such as hay cutting, gathering, baling, wrapping, and spreading chemical fertilizers and compost  
Certificates ISO 9001 (JIS Q 9001)

### IHI Fuso Engineering Co., Ltd.

Developing, selling, engineering, manufacturing, and installing multi-story parking systems

### IHI Logistics & Machinery Corporation

Sales, Engineering, Manufacturing, Procurement, Construction and Maintenance Service of Material Handling Systems, Factory Automation Systems and Industrial Machinery. Consulting and Engineering on Material Handling Facilities, Factory Automation Facilities and Industrial Machinery



Main Works **Motomiya Works**  
Site Area Approx. 34,000 m<sup>2</sup>  
Products & Services General Logistics and FA Systems  
Certificates ISO 9001:2015 / JIS Q 9001:2015  
Crane manufacturing permission

### IHI Machinery and Furnace Co., Ltd.

Engineering, manufacturing, selling, and providing after-service support for vacuum heat treatment furnaces and hot presses and other heat treatment equipment



Main Works **Kakamigahara Works**  
Site Area Approx. 16,000 m<sup>2</sup>  
Products & Services Vacuum furnaces, vacuum carburizing furnaces, and hot presses  
Certificates ISO 9001

### IHI Rotating Machinery Engineering Co., Ltd.

Manufacturing and maintaining compressors and other rotating machinery



Main Works **Tatsuno Works**  
Site Area Approx. 89,000 m<sup>2</sup>  
Products & Services Compressors, marine turbochargers  
Certificates ISO9001, ISO14001, ISO45001, JG, BV, ABS, NK, KR

### IHI Parking Square Co., Ltd.

Planning, developing, designing, manufacturing, selling, leasing, installing, maintaining, remodeling, management services of Parking Systems



Main Works **Numazu Production Center**  
Site Area Approx. 125,000 m<sup>2</sup>  
Products & Services Tower Parking Systems (Pallet Type/Palletless Type /Rotary Type), Super Square Parking Systems and Multi-story Parking Systems

### IHI Turbo Co., Ltd.

Manufacturing and selling vehicular turbochargers



Main Works **Kiso Works**  
Site Area Approx. 65,000 m<sup>2</sup>  
Products & Services Automotive turbochargers  
Certificates IATF 16949:2016, ISO 14001:2015, NK, JG

### IHI Turbo Service Co., Ltd.

Repairing, engineering, manufacturing, selling, and servicing after-market turbochargers

### Paul Wurth IHI Co., Ltd.

Engineering, manufacturing, construction work, and after-sales servicing for iron, steel and coke-making plants, including blast furnaces, coke oven batteries, and electric arc furnaces

### Voith IHI Paper Technology Co., Ltd.

Designing, manufacturing, selling, installing, and maintaining and repairing paper manufacturing plants

## Aero Engine, Space & Defense Business Area

### IHI Aero Manufacturing Co., Ltd.

Manufacturing aircraft jet engine fan blades, compressor blades, and vanes



Site Area Approx. 13,000 m<sup>2</sup>  
Products & Services Manufacturing aircraft jet engine fan blades, compressor blades, and vanes  
Certificates JIS Q 9100, Nadcap

### IHI AEROSPACE CO., LTD.

Engineering, manufacturing, and selling space equipment and defense machinery, and manufacturing and selling aero engine parts



Main Works **Tomioka Plant**  
Site Area Approx. 490,000 m<sup>2</sup>  
Products & Services Rockets and other space-related products, defense-related products and aero engine parts  
Certificates JIS Q 9100 and JIS Q 9001 (ISO 9001)  
ISO 14001 (JIS Q 14001),  
JIS Q 27001 (ISO/IEC27001)  
ISO 45001

### IHI AEROSPACE ENGINEERING CO., LTD.

Engineering, researching, and experimenting under contracting for space development equipment

### IHI CASTINGS CO., LTD.

Manufacturing and selling precision castings



Main Works **Soma Plant**  
Site Area Approx. 15,000 m<sup>2</sup>  
Products & Services Precision castings, including for aero engines and industrial gas turbines  
Certificates JIS Q 9100 & JIS Q 9001 (ISO 9001)  
JIS Q 14001 (ISO 14001), Nadcap

### IHI Jet Service Co., Ltd.

Maintaining gas turbine power plants, providing engineering and production support for aero engines and space development, selling aero engine parts, and providing IHI Ocean Monitoring Service

### IHI MASTER METAL Co., Ltd.

Manufacturing and selling precision casting materials and special alloys and other products



Site Area Approx. 13,000 m<sup>2</sup>  
Products & Services Ingots for precision castings of nickel and cobalt-based alloys  
Certificates JIS Q 9100 and JIS Q 9001 (ISO9001)  
JIS Q 14001 (ISO 14001)  
JIS Q 17025 (ISO/IEC17025), Nadcap

### INC Engineering Co., Ltd.

Consulting and engineering and manufacturing sound and vibration control equipment, aero engine and aerospace test facilities

## Others

### IHI Business Support Corporation

Real estate management, insurance agent business and data processing services and more

### IHI Inspection & Instrumentation Co., Ltd.

Inspections and measurements of plants and components  
Chemical and environmental analysis  
Developing, engineering, designing, manufacturing, and installing of control and monitoring systems including various types of testing equipment, security inspection, mechatronics and measurement equipment

### IHI Scube Co., Ltd.

Developing, maintaining, and supporting computers and network systems related to information and communication, engineering, manufacturing, and other areas and providing management services for computer systems operations maintenance

### IHI TRADING, INC.

Selling equipment and machinery, turbochargers, parking equipment, concrete products, and other products

### Takashima Giken Co., LTD.

Designing, manufacturing, selling, installing, repairing and maintaining of various types of high-speed automatic inspection equipment

### Toyosu Energy Service Co., Ltd.

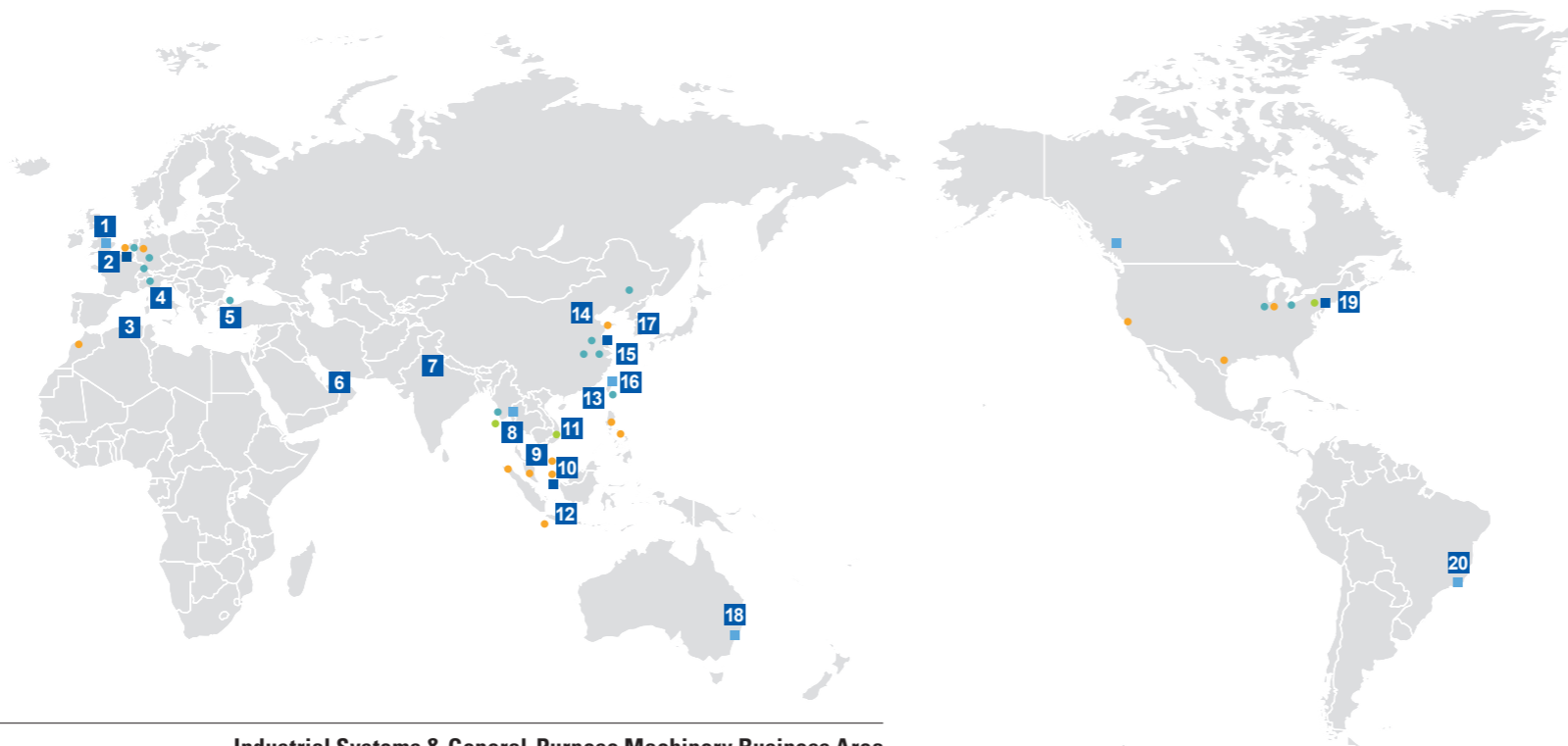
Businesses related to supplying electric power, steam, hot water, and air conditioning

# Global Network and Works of Overseas Group Companies

(As of April 1, 2026)

## Overseas Bases

- |              |              |
|--------------|--------------|
| 1 UK         | 11 VIETNAM   |
| 2 BELGIUM    | 12 INDONESIA |
| 3 ALGERIA    | 13 HONG KONG |
| 4 ITALY      | 14 BEIJING   |
| 5 TURKEY     | 15 SHANGHAI  |
| 6 UAE        | 16 TAIWAN    |
| 7 INDIA      | 17 KOREA     |
| 8 THAILAND   | 18 AUSTRALIA |
| 9 MALAYSIA   | 19 USA       |
| 10 SINGAPORE | 20 BRAZIL    |



## EUROPE, MIDDLE EAST, AFRICA

### Regional Headquarters

- BELGIUM/ IHI Corporation Brussels Representative Office

### Regional Companies

- UK/ IHI Europe Ltd.

### Resources, Energy & Environment Business Area

- NETHERLANDS/ Niigata Power Systems(Europe) B.V.
- GERMANY/ Steinmüller Engineering GmbH
- MOROCCO/ Steinmüller Engineering North Africa SARLAU

### Industrial Systems & General-Purpose Machinery Business Area

- NETHERLANDS/ IHI Hauzer Techno Coating B.V.
- SWITZERLAND/ IHI Ionbond AG
- GERMANY/ IHI VTN GmbH
- ITALY/ IHI Charging Systems International S.p.A.
- TURKEY/ IHI DALGAKIRAN MAKINA SANAYI VE TICARET A.Ş.

## ASIA, PACIFIC

### Regional Headquarters

- SINGAPORE/ IHI ASIA PACIFIC PTE. LTD.
- CHINA/ IHI (Shanghai) Management Co., Ltd.

### Regional Companies

- THAILAND/ IHI ASIA PACIFIC (Thailand) Co., Ltd.
- TAIWAN/ IHI Taiwan Corporation
- AUSTRALIA/ IHI ENGINEERING AUSTRALIA PTY. LTD.
- HONG KONG/ IHI (HK) Ltd.

### Resources, Energy & Environment Business Area

- SINGAPORE/ Jurong Engineering Limited
- SINGAPORE/ Niigata Power Systems (Singapore) Pte. Ltd.
- MALAYSIA/ IHI POWER SYSTEM MALAYSIA SDN.BHD.
- MALAYSIA/ ISHI POWER SDN BHD
- INDONESIA/ PT IHI POWER SERVICE INDONESIA
- PHILIPPINES/ IHI PHILIPPINES, INC.
- PHILIPPINES/ Niigata Power Systems Philippines, Inc.
- CHINA/ Niigata Power Systems (Shanghai) Co., Ltd.

### Social Infrastructure Business Areas

- MYANMAR/ I&H Engineering Co., Ltd.
- VIETNAM/ IHI INFRASTRUCTURE ASIA CO., LTD.

### Industrial Systems & General-Purpose Machinery Business Area

- THAILAND/ IHI TURBO (THAILAND) CO., LTD.
- CHINA/ IHI-Sullair Compression Technology (Suzhou) Co., Ltd.
- CHINA/ Changchun FAWER-IHI Turbo Co., Ltd.
- CHINA/ WUXI IHI TURBO CO., LTD.
- CHINA/ Jiangsu IHI Fengdong Vacuum Technology Co., Ltd.
- TAIWAN/ IHI System Technology Taiwan Co., Ltd.

## AMERICAS

### Regional Headquarters

- USA/ IHI Americas Inc.

### Regional Companies

- CANADA/ IHI (CANADA) LTD.
- BRAZIL/ IHI do Brasil Representações Ltda.

### Resources, Energy & Environment Business Area

- USA/ IHI Energy Solutions Inc.
- USA/ IHI Power Generation Corp.
- USA/ IHI Terrasun Solutions Inc.

### Social Infrastructure Business Areas

- USA/ IHI California Inc.

### Industrial Systems & General-Purpose Machinery Business Area

- USA/ IHI Turbo America Co.
- USA/ IHI Press Technology America, Inc.



● IHI Charging Systems International S.p.A. (ITALY)

Site Area Approx. 19,000 m<sup>2</sup>  
 Products & Services Automotive turbochargers  
 Certificates IATF 16949,ISO 14001,ISO 45001



● PT IHI POWER SERVICE INDONESIA (INDONESIA)

Site Area Approx. 250,000 m<sup>2</sup>  
 Products & Services Boilers, steel structures, container cranes, piping and pressure vessels, HRSG  
 Certificates ISO9001:2015, ISO45001:2018,ISO14001:2015, ISO3834, ASME (S,U,U2,PP,NB,R), BS EN1090,NHSS(19A,20), EBTKE,SKUP,SMK3



● IHI INFRASTRUCTURE ASIA CO., LTD. (VIETNAM)

Site Area Approx. 140,000 m<sup>2</sup>  
 Products & Services Manufacturing, installation, repair and maintenance of steel structures, concrete products and industrial equipment  
 Certificates ISO 9001, ISO14001,45001, DIN EN ISO3834 Part2



● IHI TURBO (THAILAND) CO., LTD. (THAILAND)

Site Area Approx. 53,000 m<sup>2</sup>  
 Products & Services Automotive turbochargers  
 Certificates ISO/TS 16949, ISO 14001,ISO 45001



● Changchun FAWER-IHI Turbo Co., Ltd. (CHINA)

Site Area Approx. 43,000 m<sup>2</sup>  
 Products & Services Automotive turbochargers  
 Certificates ISO/TS 16949,IATF 16949, ISO 14001,OHSAS 18001



● WUXI IHI TURBO CO., LTD. (CHINA)

Site Area Approx. 16,000 m<sup>2</sup>  
 Products & Services Automotive turbochargers  
 Certificates IATF 16949,ISO 14001, ISO 45001



● IHI Turbo America Co. (USA)

Site Area Approx. 65,000 m<sup>2</sup>  
 Products & Services Automotive turbochargers  
 Certificates IATF 16949

## Regional Headquarters and Business Development Bases

### Asia Pacific Headquarters / SINGAPORE

IHI ASIA PACIFIC PTE. LTD.

77 Robinson Road, #14-03 Robinson 77, SINGAPORE 068896  
TEL: +65(6515)6609

### China Headquarters / SHANGHAI

IHI (Shanghai) Management Co., Ltd.

Room041, 8th Floor, Hang Seng Bank Tower, 1000, Lujiazui Ring Road,  
Pudong New Area, Shanghai, 200120 CHINA  
TEL: +86(21)6841-1717

### Americas Headquarters / USA

IHI Americas Inc.

1251 Avenue of the Americas, 7th Floor, Suite 750, New York,  
NY 10020 USA  
TEL: +1(212)599-8100

### Europe Headquarters / BELGIUM

IHI Corporation Brussels Representative Office

Rue de la Science 14 (3rd Floor), 1040 Brussels, Belgium  
TEL: +32(2)593-9880

## Business Development Bases

UK:	<b>IHI Europe Ltd.</b> 2nd Floor, America House, 2 America Square, London EC3N 2LU, UNITED KINGDOM TEL: +44(20)7481-8180
ALGERIA:	RESIDENCE LES IRIS, BLOC B, 02eme étage, côté gauche, Plaza, Hai Khemisti, Boulevard Millenium, Bir El Djir, Oran, ALGERIE TEL: +213(41)730576
ITALY:	Via Barberini, 67, 7F, Room 16/17, Rome 00187, ITALY TEL: +39(06)59876-859
TURKEY:	Esentepe Mahallesi Harman Sokak, Harmanci Giz Plaza No:5 Kat:18 D:35 34394 Levent-Sisli Istanbul TURKEY TEL: +90(850)252-2122 FAX: +90(212)282-8370
UAE:	Emirates Financial Towers, South Tower, Level 4, Office No. S-403 DIFC, P.O. Box 506940, Dubai, UNITED ARAB EMIRATES TEL: +971(4)458-3864 FAX: +971(4)458-4096
INDIA:	302A, Salcon Ras Vilas, District Centre Saket, New Delhi-110017, INDIA TEL: +91(11)4105-2694 ,+91(11)4166-3504 FAX: +91(11)4166-3503
THAILAND:	<b>IHI ASIA PACIFIC (Thailand) Co., Ltd.</b> No. 6, O-NES Tower, 10th Floor, Soi Sukhumvit 6, Klongtoey, Klongtoey District, Bangkok 10110, THAILAND TEL: +66(2)236-3490 ,+66(2)236-9099 FAX: +66(2)236-7340
MALAYSIA:	Letter Box No.52, 19th Floor, UBN Tower, No.10, Jalan P. Ramlee, 50250 Kuala Lumpur, MALAYSIA TEL: +60(3)2072-1255 FAX: +60(3)2072-1418
VIETNAM:	Unit 515, Sun Red River, 23 Phan Chu Trinh Street, Hoan Kiem District, Hanoi, VIETNAM TEL: +84(24)3934-5305 FAX: +84(24)3934-5303
INDONESIA:	Mid Plaza II, 17th Floor, Jl. Jendral Sudirman Kav.10-11 Jakarta 10220 INDONESIA TEL: +62(21)570-7701 FAX: +62(21)570-7705
HONG KONG:	<b>IHI (HK) Ltd.</b> Unit A, 25/F., One Island South, 2 Heung Yip Road, Wong Chuk Hang, HONG KONG TEL: +852(2522)4093
BEIJING:	Room2359, L23, China World Tower B, 1 Jianguomenwai Avenue, Chaoyang District, Beijing 100004, CHINA TEL: +86(10)8509-8523
TAIWAN:	<b>IHI Taiwan Corporation</b> Room 1202, Chia Hsin Building No.96, Sec.2, Zhongshan N. Road, Taipei, 104418, TAIWAN TEL: +886(2)2542-5520 FAX: +886(2)2542-4362
KOREA:	9F, Seoul Finance Center B/D, 136, Sejong-Daero, Jung-Gu, Seoul 04520, KOREA TEL: +82(2)753-8605 FAX: +82(2)755-4772
AUSTRALIA:	<b>IHI Engineering Australia Pty. Ltd.</b> Suite 32.02, Level 32, 100 Miller St, North Sydney NSW 2060 AUSTRALIA TEL: +61(2)9923-9300
BRAZIL:	<b>IHI do Brasil Representações Ltda.</b> Avenida Paulista, 726 – Sala Vista, São Paulo, SP, 01310-910, BRAZIL TEL: +55(11)3251-2593

## IHI Corporation

### Head Office

Toyosu IHI Bldg., 1-1, Toyosu 3-chome, Koto-ku, Tokyo 135-8710 Japan  
TEL: +81-3-6204-7800



ihi.co.jp

- Information contained in this catalog is that as of July, 2026
- Note that specifications, dimensions and appearance contained in the catalog may be changed without notice for improvement.
- Note that the color tone of the product on the catalog may appear different from that of the actual product for reasons attributable to printing.
- Note that the addresses may be changed.

© IHI Corporation All Rights Reserved.  
2606-7000CW(HH391) Printed in Japan