

## Specifications

Items	Number	Unit	0950AT	0950AN	2240AT	2240AN
<b>Binding</b>			<i>Twine</i>	<i>Net</i>	<i>Twine</i>	<i>Net</i>
<b>Pick-up</b>						
Working width		cm	170	170	170	170
Both end of tine		cm	130	130	130	130
The number of knives		pcs	7	7	8	8
Theoretical Cutting length		cm	10	10	10	10
Guage wheels			○	○	○	○
Pick up motion			Electrical motor	Electrical motor	Electrical motor	Electrical motor
Unplugging device			Pivoting drop floor	Pivoting drop floor	Pivoting drop floor	Pivoting drop floor
<b>Bale Chamber</b>						
Diameter		cm	90	90	100	100
Width		cm	86	86	100	100
The number of Steel rollers		pcs	12	12	14	14
Automatic lubricaiton system			○	○	○	○
Indicating lamp			○	○	○	○
<b>Required Tractor Power</b>						
Power		kW (PS)	26~51.5(35~70)	26~51.5(35~70)	29.5~59(40~80)	29.5~59(40~80)
Working speed		km/hr	4-8	4-8	4-10	4-10
PTO shaft speed		r.p.m.	540	540	540	540
<b>Overall Dimention</b>						
Length		cm	320	320	330	330
Width		cm	190	190	200	210
Height		cm	190	190	200	205
Aprox.weight		kg	1250	1300	1700	1750
<b>Tire size</b>						
			11L-15-8PR	11L-15-8PR	12.5L-15-8PR	12.5L-15-8PR
<b>Connection/Others</b>						
Wide angle P.T.O.shaft			○	○	○	○
2P Pin Category			Category I	Category I	Category I	Category I
Power package			○	○	○	○
Full automatic operation system			○	○	○	○
<b>Voltage(Control Box)</b>						
			12-13.8V	12-13.8V	12-13.8V	12-13.8V

○ = STANDARD

Remarks : Bale size and Bale weight varies depending on materials.

Figures, technical data, dimensions and weights are subject to changing without notice.



# ROUND BALER

MODEL:TCR0950AT / AN

MODEL:TCR2240AT / AN



IHI Agri-Tech Corporation

1061-2 Kamiosatsu,Chitose,Hokkaido, 066-8555,Japan

TEL : 81-123-26-2210

FAX : 81-123-26-2412

<http://www.ihico.jp/iat/en/>



# The high mobility and performance

For efficient silage, hay and straw baling especially for a small field.



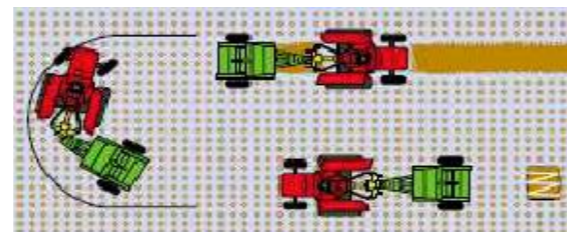
## Why choose Midium Size

Compact size and light body is very friendly with small and middle size tractor. Our model can be operated from 30PS. Light weight and Lower gravity is also suitable for operating in wet or/and slope fields where Big size Round Baler can not enter.



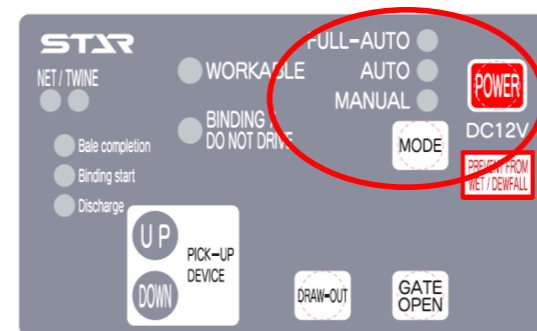
## 2P swivel hitch w/wide angle

Because of the combination of 2P swivel hitch and wide angle universal joint, the baler can turn sharply during pickup operation. Without paying too much attention for the angle of universal joint, you can turn even in a corner of field to pick up the material.



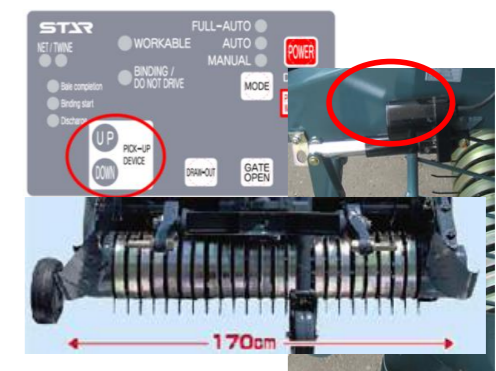
## Full automatic baling

Not only the binding, the tale gate opening is also automated. In full automatic mode, you can operate the machine easier since the binding and gate opening/closing is done automatically. In manual mode, you can operate the machine by switches in driver's seat.



## Pick-up with electric control

The position of the pick-up is easily changed by just pushing the switch in operation box then you can concentrate on tractor driving. Small diameter pickup can lift up windrows smoothly. The 170cm pickup enables to pickup various material length and size of windrows even though in a field corner.





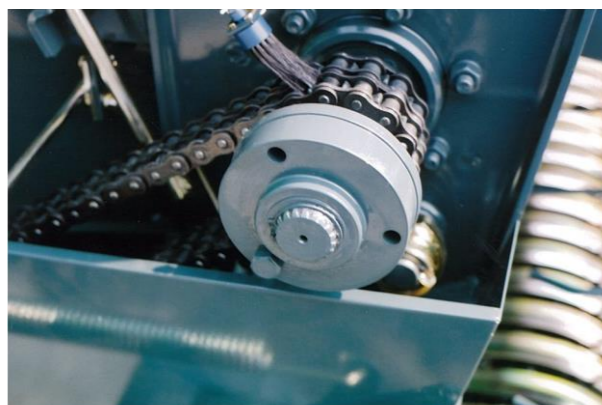
# Designed with highly reliable technology

We always stand close to you  
and reflect your demands on our products.



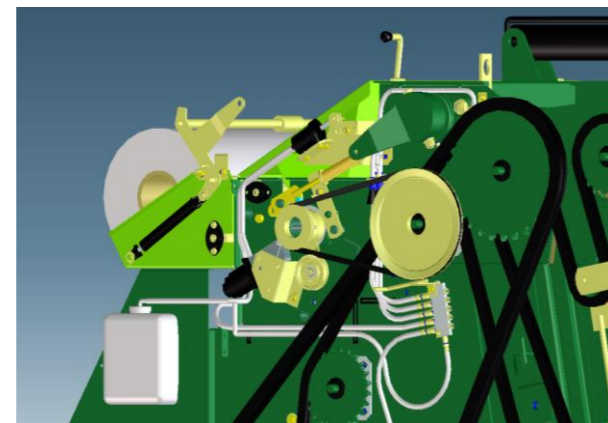
## Safety device

The baler has two shear bolts in the roller drive and cutting rotor drive, and a slip clutch in the pickup device. They can protect the devices of the machine from breakage occurred by overload.



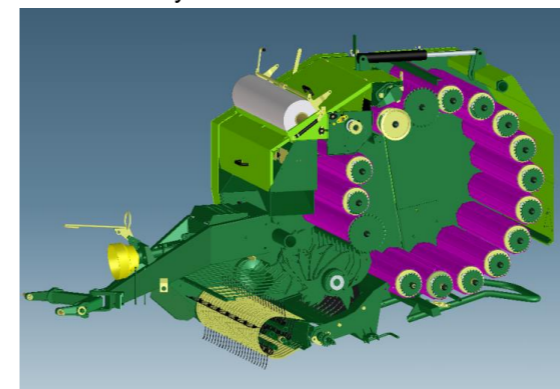
## Automatic chain lubrication

The lubrication for roller chains are done automatically at every gate opening. Not only saving you a lot of work, it ensures to extend the lifetime of the machine.



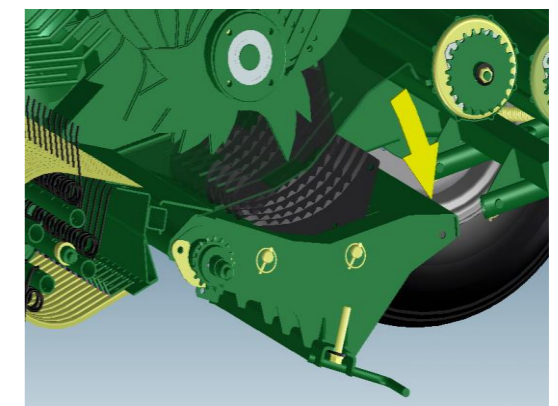
## Heavy-duty steel rollers

Steel rollers are made by solid-drawn high-tensile steel pipe. These heavy-duty rollers ensure high durability and smooth rotation without vibration and noise. From the point of maintenance, it is easy to pull and put steel rollers and which save your time.



## Easy open bottom frame

If the material is clogged around the rotor, you can open bottom frame of cutting device by just loosening two bolts, and recover from the clogging quickly.







All technology  
for your daily  
work

Selectable binding system

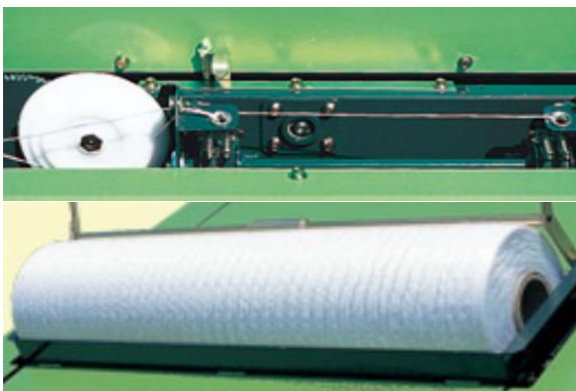
### Binding device

You can choose either double twine binding device or net binding device.

**Twine binding (Model:-AT)** provides good efficiency with low binding material cost.

**Net binding (Model:-AN)** provides excellent efficiency and minimum loss of crop.

Since both devices are located in front of the baler, binding process can be easily found from driver's seat.



### Binding indicate lamp

When the bale reaches to set density, not only buzzer starts to sound, but also indicate lamp starts to flashes.

Since the timing to stop running for binding is informed by both sound and visual effects, operator can easily notice the timing without fail.



### Cutting device (TCR0950A/2240A)

The density of the bale increases around 15% higher than non-cut bale.

This results in better quality silage and efficiency for transportation and storage.



### Power package

Hydraulic outlet of the tractor doesn't required since the hydraulic power package. Power package ensures stable oil pressure and prevents the tractor from the trouble occurred by the mixture oil of different tractors.

